



# The 3rdEye GPS System

*Since 1997*

The **first** in the Philippines.

The **most widely used** in the Philippines.

The only GPS **made and patented in the Philippines.**

<b>SAVE TIME, SAVE FUEL, INCREASE PRODUCTIVITY</b>	
<input checked="" type="checkbox"/>	Yes
<input type="checkbox"/>	No

*This page intentionally left blank.*

## ABOUT US

### We are StarComm

Incorporated in **1997**, we proudly carry decades of expertise in the fields of computers, embedded controls, remote control, factory automation and remote data acquisition.

**20<sup>th</sup> Anniversary**  
**1997-2017**

StarComm is the proud developer and manufacturer of the **3rdEye GPS Vehicle Monitoring System**. Since its inception, the 3rdEye has benefited thousands of companies in various industries by providing the most cost-effective way of maximizing their vehicle and personnel resources while increasing productivity and revenue.

Registered Name : Star Communications Holdings Corp.  
Legal Form : Corporation  
Country of Registration : **Philippines**  
Year Founded : 1997  
Mailing Address : 37 Samat Street  
Barangay Santo Domingo, Santa Mesa Heights  
1114 Quezon City, Metro Manila, Philippines  
Telephone : +63 (2) 416 0396 to 0938, 731 9335, 731 9303  
Facsimile : +63 (2) 416 0935  
E-mail : [sales@starcomm.com.ph](mailto:sales@starcomm.com.ph)  
Website : <http://www.starcomm.com.ph>

## OUR IN-HOUSE MANUFACTURING



## KEY ADVANTAGES

- The 3rdEye is the Philippines' first, oldest and most widely-used GPS System.
- We manufacture the 3rdEye GPS locally. You are dealing directly with us and not merely a reseller or dealer.
- Many of our customers are listed in the Philippines Top 1,000 Corporations. The 3rdEye has passed their very stringent supplier accreditation examinations.

***They want the best GPS for their money, not the cheapest. That is why **WE** are their sole GPS supplier.***

## HOW YOU WILL BENEFIT

- **Bank on our 20 years of GPS expertise**  
We have spent the past 20 years perfecting our 3rdEye GPS. It is designed to excel in the Philippine environment and generates reports that enables businesses to best manage their vehicles, be more efficient, more productive and more profitable.
- **Have peace of mind**  
New GPS Suppliers lack experience. You may have problems they cannot solve and so buying from them could be risky. On the other hand, the 3rdEye GPS gives you peace of mind as thousands of companies nationwide have been using it for decades. We know they are all very satisfied because they place repeat orders.
- **Enjoy fast and efficient aftersales services**  
Our senior technicians and programmers have decades of experience under their belts and we stock a complete inventory of spare parts. GPS downtime will be kept as low as possible while we train and certify your staff to make the best use of the 3rdEye.

## SOME OF OUR VALUED CUSTOMERS





# The 3rdEye GPS System

## WHAT IS THE 3RDEYE

The 3rdEye is the Philippines' first locally-developed GPS vehicle monitoring system.



Developed in 1997 and with patents filed in 1998, the 3rdEye Vehicle Monitoring System has benefited numerous businesses both here and abroad. With the 3rdEye, your vehicles are more efficiently utilized and security is enhanced.



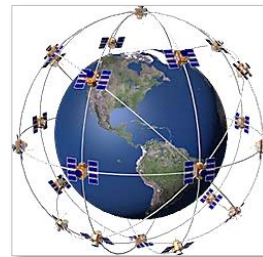
*3rdEye GPS Unit installed in the vehicle's glove compartment*

We are very proud of the 3rdEye:

- It is the Philippines' first, oldest and most widely-used GPS System.
- It is proudly Philippine Made
- It has an excellent track record of customer satisfaction since 1997.

## WHAT IS GPS

GPS or the Global Positioning System is THE STANDARD for accurate positioning worldwide.



*GPS Satellites orbiting the Earth*

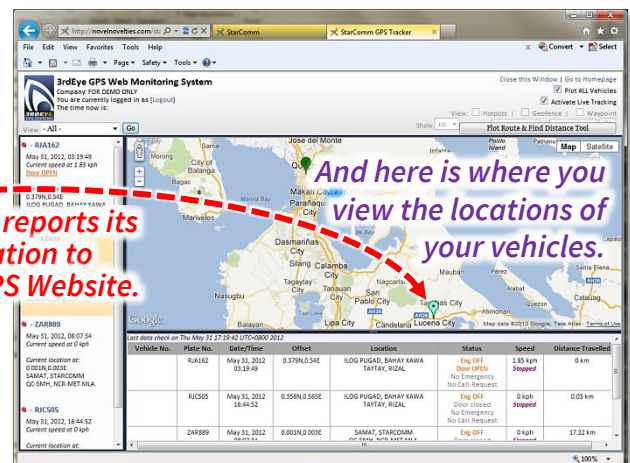
- **Origin:** Put up in the early 1980's by the United States Department of Defense to serve as a satellite-based radio navigation & positioning system
- **Coverage:** Worldwide, 24-hour, all-weather.
- **Number of Active Satellites:** 24 satellites orbiting the Earth twice daily
- **Accuracy:** 10-meter radius, 95% of the time (as per White House Press Release, May 2000)
- **For more info:** <http://www.gps.gov>

***The 3rdEye uses GPS to determine the location of your vehicles.***

## HOW IT WORKS



***Then it reports its location to our GPS Website.***



## FEATURES

The 3rdEye GPS tells you where your vehicles are **RIGHT NOW**.

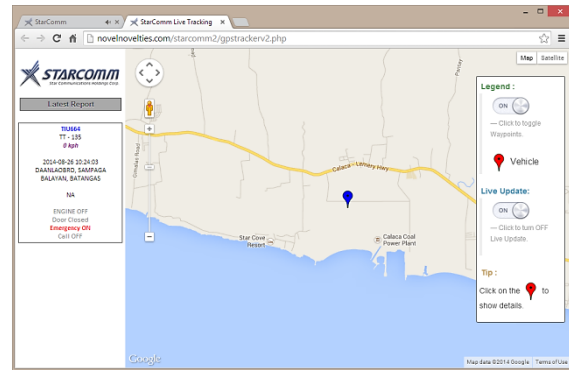
- Be notified of events such as engine on/off and cargo door open/closed, all in real-time.
- Be alerted via a “Panic” switch that the driver can activate when needed.
- Tag your locations and save them as **WAYPOINTS**
- Set boundaries that your vehicles must not cross with **GEOFENCES**
- Define areas your vehicles must not go to with **HOTSPOTS**

## Parts of the 3rdEye GPS System



### The Real-Time Mobile Unit

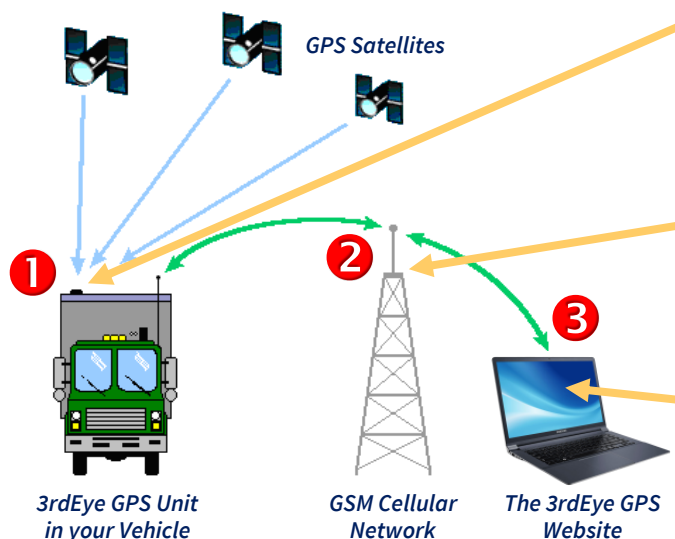
- One per vehicle
- Roughly the size of a car stereo unit
- Comes with GSM Cellular Antenna and an outdoor GPS Antenna
- Heavy-duty metal casing
- Internal GSM Cellular Modem



### The 3rdEye GPS Website Subscription

- Displays Real-Time reports
- Includes a SIM card for each Mobile Unit
- On-time, Real-Time location reports
- See a “snail-trail” playback of your vehicle’s trip on the map
- Works with PCs, Tablets and Smartphones

## The 3rdEye GPS in 3 Easy Steps



### STEP ONE:

- GPS transmissions are received by the outdoor antenna which the **3rdEye Mobile Unit** uses to determine its location.
- The 3rdEye records the states of **sensors** such as Engine On/Off, Cargo Door Open/Closed, etc...

### STEP TWO:

- The 3rdEye has an internal GSM Cellular Modem and Post-paid SIM card.
- The 3rdEye “**texts**” location and sensor status to the 3rdEye GPS Website in regular intervals.

### STEP THREE:

- Complete reports are available on the **3rdEye GPS Website**.
- See where your vehicles are on Google, Bing, and Open Street Maps.



## THE 3RDEYE GPS IN COMMERCIAL VEHICLES



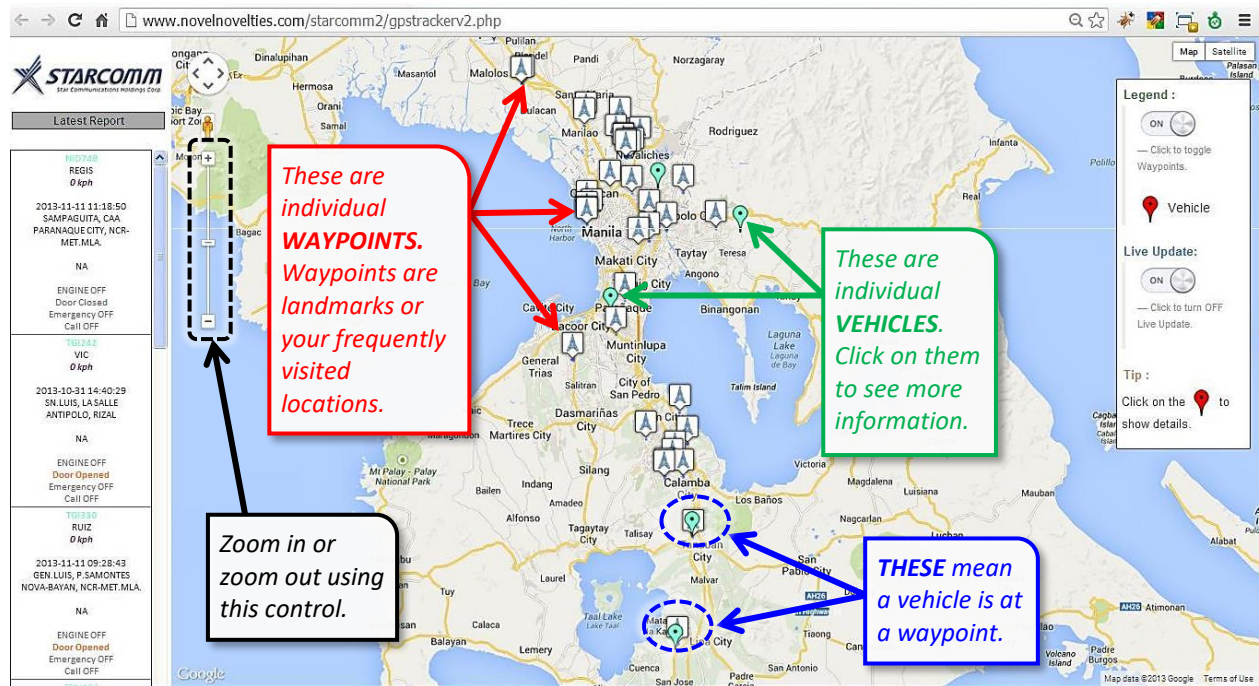
The 3rdEye GPS Unit is installed in the vehicle's **Glove Compartment**.



# THE 3RDEYE GPS WEBSITE

➔ See all your vehicles plotted on the map.

*This map automatically updates itself every time a new report comes in.*




**These are individual WAYPOINTS. Waypoints are landmarks or your frequently visited locations.**

**These are individual VEHICLES. Click on them to see more information.**

**Zoom in or zoom out using this control.**

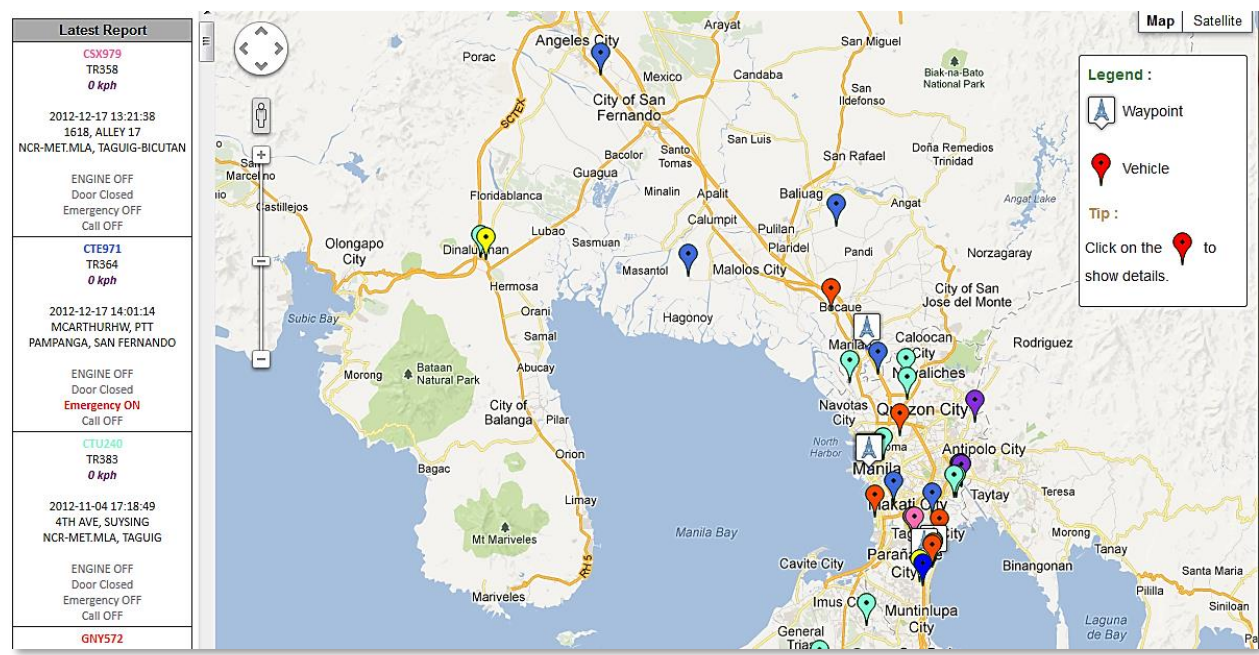
**THESE mean a vehicle is at a waypoint.**

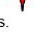
**Legend:**  
 Waypoints  
 Vehicle  
 Live Update:  Live Update  
 Tip: Click on the  to show details.

Latest Report	
<b>REGIS</b> 0 kph	2013-11-11 11:18:50 SAMPAGUITA, CAA PARANAGUE CITY, NCR-MET.MLA
NA	
ENGINE OFF Door Closed Emergency OFF Call OFF	
<b>VIC</b> 0 kph	2013-10-31 14:40:29 SM LUIS, LA SALLE ANTIPOLO, RIZAL
NA	
ENGINE OFF Door Opened Emergency OFF Call OFF	
<b>RUIZ</b> 0 kph	2013-11-11 09:28:43 GEN. LUIS, P. SAMONTES NOVA-BAYAN, NCR-MET.MLA
NA	
ENGINE OFF Door Opened Emergency OFF Call OFF	

➔ **COLOR CODE** your vehicles - make them easy to identify

For example, **RED** = delivery trucks. **GREEN** = company cars. **BLUE** = service vehicles, etc...



**Legend:**  
 Waypoint  
 Vehicle  
 Tip: Click on the  to show details.

Latest Report	
<b>CSX979</b> TR358 0 kph	2012-12-17 13:21:38 1518, ALLEY 17 NCR-MET.MLA, TAGUIG-BICUTAN
ENGINE OFF Door Closed Emergency OFF Call OFF	
<b>CTE971</b> TR364 0 kph	2012-12-17 14:01:14 MCARTHURHW, PTT PAMPANGA, SAN FERNANDO
ENGINE OFF Door Closed Emergency ON Call OFF	
<b>CTU240</b> TR383 0 kph	2012-11-04 17:18:49 4TH AVE, SUYSING NCR-MET.MLA, TAGUIG
ENGINE OFF Door Closed Emergency OFF Call OFF	
<b>GNYS72</b>	



➔ **Generate EXECUTIVE SUMMARIES. Here is the FIRST SUMMARY:**

*Make simple reports that the **BUSY BOSS** can understand.*

**Executive Summary**

Records from: 11/08/2013 to 11/08/2013

No.	Plate No.	Vehicle No.	Driver Name	Longest Continuous Trip (hh:mm:ss)	Total KM Travelled	Idling Times	Idling Total (hh:mm:ss)	Speed Times	Speeding Top (kph)	Accel Times	Accel Top	Decel Times	Decel Top
1	NID748	REGIS	ANTONIO REG	0:33:11	88	0	0:00:00	0	62.9	0	+0	0	-0
2	TGI330	RUIZ	ROMEO RUIZ	0:04:11	0	0	0:00:00	0	11.1	0	+0	0	-0
3	TOO433	JUDAY	JUDY SIMINIAJ	0:29:03	32	0	0:00:00	0	46.25	0	+0	0	-0
4	WPD388	ALMAR	ALMAR DADIA	0:00:00	0	1	0:16:57	0	0	0	+0	0	-0
5	ZEZ421			0:16:37	57	0	0:00:00	0	92.5	0	+0	0	-0
6	ZFH147			1:26:06	75	1	0:07:32	0	44.4	0	+0	0	-0
7	ZGK254	FARCO	JERICO FARCO	0:24:35	31	1	0:12:16	0	35.15	0	+0	0	-0
8	ZGK277	JERRY	JERRY BARRIE	0:00:00	0	0	0:00:00	0	0	0	+0	0	-0
9	ZGT142	LYN		0:37:47	47	1	0:12:16	0	38.85	0	+0	0	-0

Page 1 of 1

A one-day report for November 08.

Zero distance travelled. Therefore these two vehicles **WERE NOT USED** on Nov. 08. Why? Were they under repair? The **BUSY BOSS** can see this and do something about it.

92.5 kilometers per hour? This 10-wheeler truck and IS CLEARLY A CASE OF **OVER SPEEDING!** The **BUSY BOSS** can see this and do something about it.

➔ **And here is the SECOND SUMMARY:**

**Executive Summary**

Records from: 11/08/2013 to 11/08/2013

No.	Plate Number	Start Hour (hh:mm:ss)	End Hour (hh:mm:ss)	Working Hours (hh:mm:ss)	Moving Vehicle (hh:mm:ss)	Idling (hh:mm:ss)	Stop (hh:mm:ss)	Distance (km)	Longest Continuous Trip (hh:mm:ss)	Idling (Under) Times	Idling (Over) Times	Idling (Over) Times
1	NID748	05:32:46	17:06:09	11:33:23	11:00:13	0:26:44	0:06:25	88	0:33:11	13	0:26:44	0
2	TGI330	05:31:10	15:59:55	10:28:48	9:36:43	0:42:27	0:09:37	0	0:04:11	20	0:42:27	0
3	TOO433	05:43:57	18:51:01	11:07:04	10:26:32	0:33:10	0:08:21	32	0:29:03	18	0:33:10	0
4	WPD388	06:41:53	16:36:45	9:54:52	9:00:07	0:45:52	0:08:52	0	0:00:00	10	0:28:55	1
5	ZEZ421	05:34:51	16:25:58	9:51:07	8:50:29	0:54:50	0:05:47	57	0:16:37	16	0:54:50	0
6	ZFH147	08:29:35	16:22:42	7:53:07	7:38:36	0:13:20	0:01:10	75	1:26:06	4	0:05:48	1
7	ZGK254	05:43:54	17:24:49	11:40:55	10:49:42	0:43:02	0:08:10	31	0:24:35	26	0:30:46	1
8	ZGK277	05:34:46	16:52:05	11:17:19	10:46:22	0:20:02	0:10:54	0	0:00:00	7	0:20:02	0
9	ZGT142	08:22:25	15:06:22	8:56	9:47:57	0:20:23	0:05:35	47	0:37:03	1	0:08:07	1

Page 1 of 1

A one-day report for November 08.

What time each vehicle LEFT the garage.

What time each vehicle RETURNED to the garage.

This vehicle left LATE and so he also returned LATE. No surprise here. The **BUSY BOSS** can instantly see this and do something about it.

Save this report as an Adobe PDF or as a CSV file that you can open in Excel.

## CALL TO ACTION

**Get the 3rdEye GPS System.** In a few months, it will **pay for itself** in the form of **SAVINGS**.

HOW?	REASON	YOUR BENEFITS
You save <b>TIME</b>	<ul style="list-style-type: none"> <li>You know the vehicle's position at any time</li> <li>Reduce long meal and rest breaks</li> <li>More trips or more deliveries are accomplished per day – without spending more</li> </ul>	<ul style="list-style-type: none"> <li>On-time delivery equals greater customer satisfaction</li> <li>Greater customer satisfaction equals more business</li> <li>More business equals more profits!</li> </ul>
You save <b>FUEL</b>	<ul style="list-style-type: none"> <li>Less Speeding Violations</li> <li>Less unnecessary Engine Idling</li> <li>Less side trips</li> </ul>	<ul style="list-style-type: none"> <li>You save fuel and save money</li> <li>Less money spent on vehicle repairs</li> <li>You extend the service-life of your vehicles</li> </ul>
You improve <b>SAFETY</b>	<ul style="list-style-type: none"> <li>Less Speeding Violations</li> <li>Less occurrences of Harsh Braking and Sudden Acceleration</li> </ul>	<ul style="list-style-type: none"> <li>The chances of getting into an accident decreases</li> <li>If the vehicle gets into an accident, it will be <b>LESS SEVERE</b></li> </ul>
You enhance <b>SECURITY</b>	<ul style="list-style-type: none"> <li>Know where vehicles and cargo are at any time</li> <li>Know if there is an emergency and be able to respond to it immediately</li> <li><b>OPTIONAL:</b> Listen-in on the conversation inside the vehicle when needed</li> </ul>	<ul style="list-style-type: none"> <li>Protect your cargo and your personnel</li> <li>Ensure your cargo arrives safely and on time</li> </ul>

And once the 3rdEye has paid for itself, it will begin generating **PROFITS** for you and your company as its benefits do not stop as long as you use it!

### YOUR ADVANTAGES

- We have been in the GPS business for 18 years.
- We do not regard you simply as a customer, but as a partner.
- We will be here to support you for many years to come.
- Getting GPS from another supplier involves RISK while the 3rdEye is **RISK-FREE**.
- The 3rdEye was developed with **YOU** in mind.

**CONCLUSION:** The 3rdEye is the **BEST GPS SYSTEM** for you. It generates the reports you need that are **easy to understand**. You will **greatly benefit** from it!

*Don't delay. Get the 3rdEye GPS now! Please call us at (02) 416 0936 to 38 for more information.*



## SPECIFICATIONS

### Our Corporate Credentials

1.	Business Launch Year	1997	The more years of experience, the better.
2.	No. of Years in the GPS Business	20	
3.	Core Competency / Expertise	<b>Experts in GPS</b>	
4.	<b>Manufactures their own GPS</b>	Yes	
5.	Company Website	<a href="http://www.starcomm.com.ph">www.starcomm.com.ph</a>	Be confident that you are dealing with an <b>AUTHENTIC</b> (and not a <i>fly by night</i> ) GPS supplier.
6.	Appears in Google Search	Yes	
7.	Google Search Ranking (Search Key: <a href="#">GPS Tracker Philippines</a> )	Appears in Google Search Results	
8.	Thousands of customers over the years	Yes	
9.	<b>IN-HOUSE</b> Research & Development Team	Yes	Be confident of our know-how and expertise.
10.	<b>IN-HOUSE</b> Manufacturing and Production	Yes	
11.	<b>IN-HOUSE</b> Quality Control Inspection Team	Yes	
12.	<b>IN-HOUSE</b> After-sales Service Team	Yes	

### 3rdEye GPS Hardware Specifications

1.	Country of Origin	Philippines	
2.	All Metal Enclosure ( <i>not plastic</i> )	Yes	Necessary for best resistance to tampering and to prolong life of the GPS unit.
3.	Enclosure secured with Rivets ( <i>not screws</i> )	Yes	
4.	Wiring Connectors made of Metal	Yes	
5.	Wiring Harness protected by flexible tubing	Yes	
6.	UV/OV/OC/SC protection and Safety Fuse ( <i>under volt, over volt, over current, short circuit</i> )	Yes	
7.	Input Voltage Range	10-36 Volts DC	
8.	Nominal Power Consumption	500 milliamps (6 watts)	
9.	GPS Antenna	External, 16-channel, all-weather	
10.	Records vehicle trip onto a removable Memory Cartridge	Yes	For retrieval of vehicle trip in areas w/o cellular signals.
11.	Engine ON/OFF Sensor	Yes	
12.	Rear Cargo Door OPEN/CLOSED Sensor ( <i>Only for Closed Vans</i> )	Yes	
13.	Speeding Alert Buzzer	Yes	
14.	<b>OPTIONAL:</b> Temperature Sensor for refrigerated cargo ( <i>Reefer Vans</i> )	Yes	Please contact us for more information.
15.	Sends GPS reports to the Website <b>via SMS (Text Messaging)</b> which is available everywhere, instead of costly and unreliable mobile data connections ( <i>GPRS, 3G etc...</i> )	Yes	Ensures you never miss any reports. Mobile data is unpredictable in the provinces but SMS will always work.
16.	Emergency "Panic" Switch	Yes	
17.	<b>OPTIONAL:</b> Mic and Speaker for 2-way voice communications	Yes	Please contact us for more information.
18.	<b>OPTIONAL:</b> Remote Engine Immobilizer	Yes	
19.	<b>OPTIONAL:</b> Protective Metal Enclosure for the 3rdEye GPS Unit	Yes	
20.	<b>OPTIONAL:</b> Backup Battery ( <i>24-hour reserve capacity</i> )	Yes (External battery)	



### 3rdEye GPS Software and Website Features

1.	Compatible with the new long plate numbers <i>(For example: AAA-1234)</i>	Yes	
2.	Ability to give your vehicles a “ <b>code name</b> ” <i>(For example: Service Vehicle = SV, Delivery Truck = DT)</i>	Yes	Necessary for quick vehicle identification and tracking.
3.	Proprietary nationwide database of Street names, City names, Province Names and Major Landmarks	Yes	
4.	Password Protected Log-in	Yes	
5.	All reports can be saved in both PDF and CSV formats	Yes	
6.	Web-based Monitoring	Yes	
7.	Number of simultaneous user log-ins	Unlimited	
8.	Data Retention on Website	One (1) Year	Necessary for long-term use and dependability.
9.	Data Retention on Local Data Center	Unlimited	
10.	Website developed and maintained <b>IN-HOUSE</b>	Yes	

### 3rdEye GPS System-Generated Reports

1.	<b>Text Chart</b> showing locations of all vehicles	Yes	
2.	<b>Text Chart</b> shows the <b>SENSOR STATUS</b> of all vehicles <i>(E.g., Engine ON/OFF, Rear Cargo Door OPEN/SHUT)</i>	Yes	
3.	Detailed Daily Vehicle Travel Report	Yes	
4.	Individual Engine ON/OFF Report	Yes	
5.	<b>VIOLATIONS REPORTS</b> – be informed of: <ul style="list-style-type: none"> <li>Over-Speeding</li> <li>Excessive Engine Idling</li> <li>Rapid Acceleration</li> <li>Harsh Braking</li> <li>Nonstop driving for more than 4 hours</li> </ul>	Yes	Necessary for you to address reckless driving and other safety violations that can result in accidents.
6.	Vehicle location plotted on <b>Google Maps</b>	Yes	This makes report analysis much quicker and easier.
7.	Locations of <b>all vehicles</b> on Google Maps	Yes	
8.	Vehicle trip <b>Playback</b> on Google Maps	Yes	
9.	Google Map Playback shows <b>Vehicle Status</b> <i>(E.g., Moving, Idling, Stopped)</i>	Yes	
10.	Option to use <a href="#">Open Street Maps</a>	Yes	
11.	Option to use <a href="#">Microsoft Bing Maps</a>	Yes	
12.	<b>Executive MONTHLY Summary</b>	Yes	
13.	<b>WAYPOINT</b> – create and identify your own landmarks (frequently-visited locations) and <b>be informed</b> if a vehicle goes there.	Yes	Necessary for vehicle security and control.
14.	Emergency Report – all alert instances	Yes	
15.	<b>GEOFENCE</b> – keep a vehicle within a certain area and <b>be informed</b> if it exits that area.	Yes	
16.	<b>HOTSPOT</b> – keep a vehicle out of a certain area and <b>be informed</b> if it enters that area.	Yes	This makes report analysis much quicker and easier.
17.	<b>TRIP VERIFICATION</b> – <b>be informed</b> once vehicles enter scheduled Waypoints, if they arrive on time, late or early, if the Waypoint was missed, or if they go to an unscheduled Waypoint, including time of entry, time of exit and how much time they spend there.	Yes	

## 3rdEye GPS USERS



## WHY THEY USE THE 3rdEye

They use our 3rdEye GPS to monitor their vehicles because they wanted the **BEST** GPS for their money – not the cheapest.

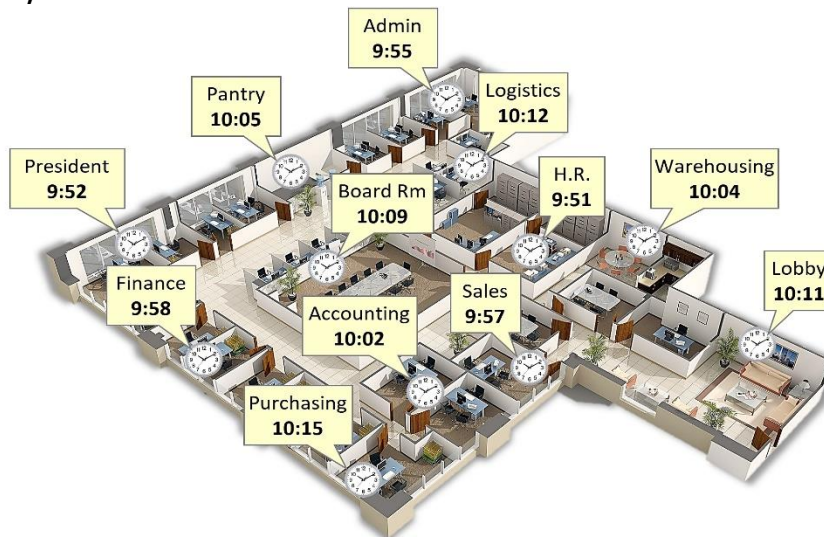
- *The 3rdEye is the Philippines' first, oldest and most widely-used GPS System, since 1997!*
- *We manufacture the 3rdEye locally. You are dealing directly with us, the manufacturer – not a third-party dealer or importer.*
- *Most of our customers are listed in the Philippines Top 1,000 Corporations. Our 3rdEye GPS System has passed all of their strict supplier accreditation examinations. We are sure it will pass yours, too.*

# SYNCHRONIZED CLOCKS

If your clocks are like this:



Then your offices will be like this:



Not good. Having no standard time means tardy employees, delays and money lost.

**Correct this now with *SyncRight* synchronized clocks.**



- Replace your wall clocks with **SyncRight**. Have the right time, the same time, everywhere, every time.
- Tell your employees that you are serious about being on time. Cultivate punctuality and wise time-management.
- Having a "Standard Time" in your company will increase productivity, efficiency and PROFIT!

**Call us! (02) 416 0936 to 38**  
[sales@starcomm.com.ph](mailto:sales@starcomm.com.ph) [www.starcomm.com.ph](http://www.starcomm.com.ph)